

valco
baby

PRODUCT REFERENCE GUIDE

ZEE
SPARK
Stroller

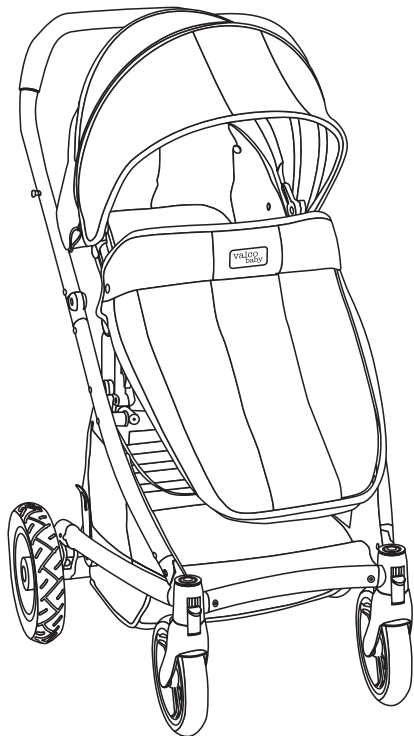


© Copyright
VE 2012
vs190912

FURTHER INFORMATION:
www.valcobaby.com.au

Find us on:





ZEE SPARK

Stroller

Thank you for purchasing a quality VALCO BABY product. Please read and follow the instructions outlined in this guide carefully. Familiarise yourself with the construction and safety features; be sure that you understand all the warnings and safety guidelines before use.

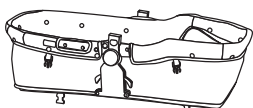
⚠ Important: Please read the following instructions carefully before assembling this product. Retain this guide in a safe place for future reference.

DISCLAIMER

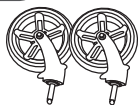
Due to our policy of continuous product development, this product is constantly evolving. It is possible that some features or procedures outlined here have changed since this document was written. If you are unsure of any procedure shown here, please contact us via the web at info@valco.com.au to obtain the most up to date information before use. Include the batch number and model number, which can be found on a sticker on the frame.

All pictures and diagrams herein are provided for illustration purposes only. Actual product, colour or fabric may vary. VALCO BABY reserves the right to modify or alter any specification or colour without notice or obligation to modify any product previously purchased.

1 > PARTS LIST



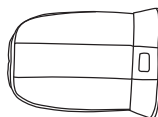
SEAT



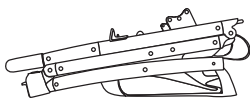
2x FRONT WHEELS



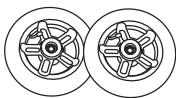
BUMPER BAR



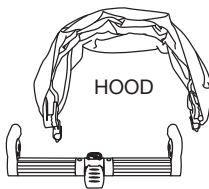
BOOT COVER



FRAME

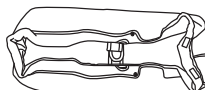


2x REAR WHEELS



HOOD

REAR BRAKE AXLE

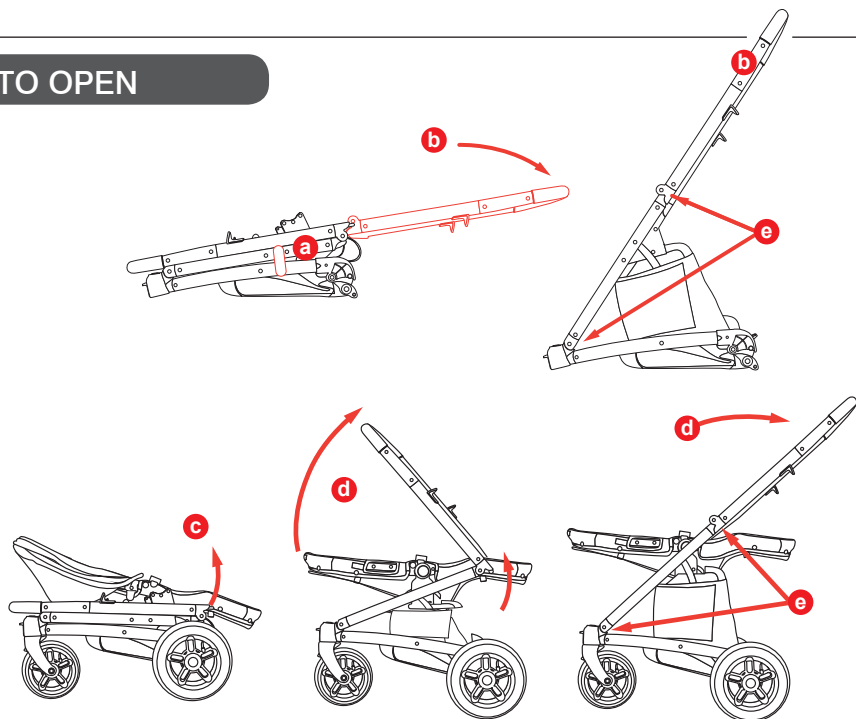


BASSINET LINING
& MATTRESS

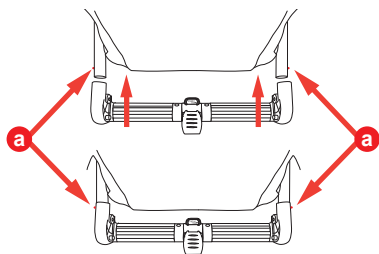


2x AXLES

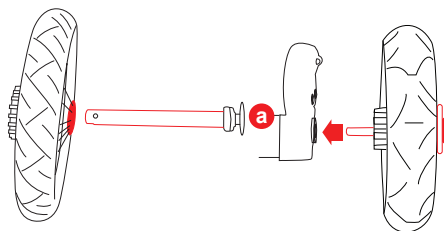
2>TO OPEN



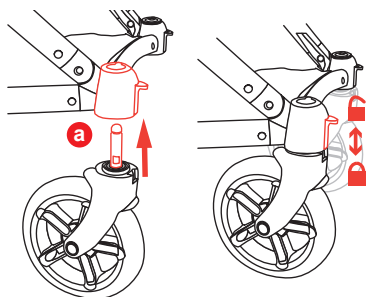
3>REAR AXLE



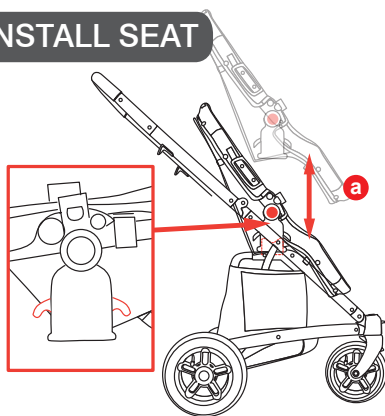
4>REAR WHEELS



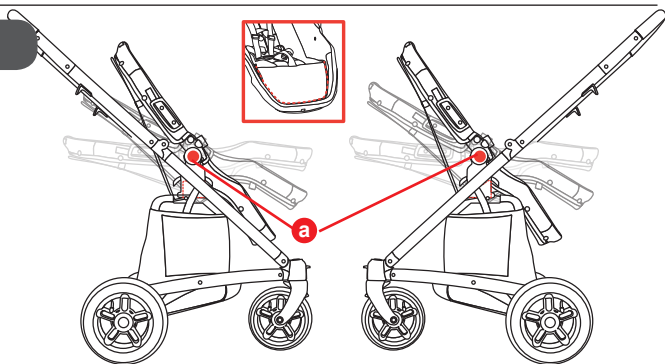
5>FRONT WHEELS



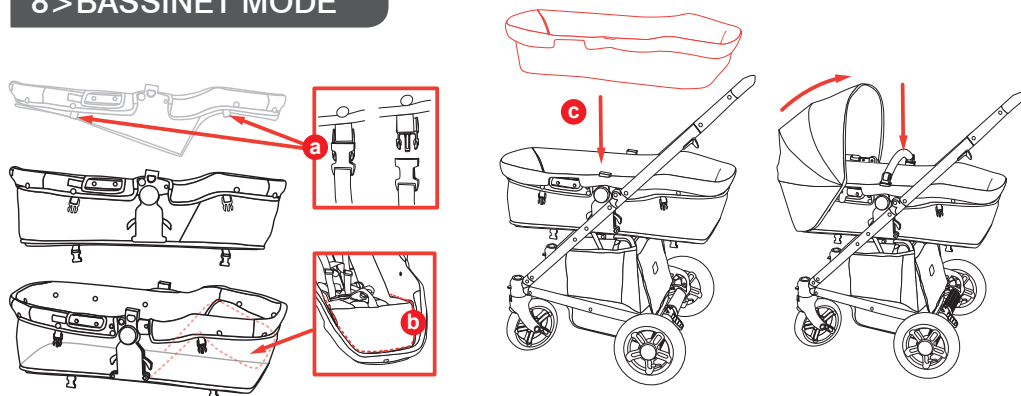
6>INSTALL SEAT



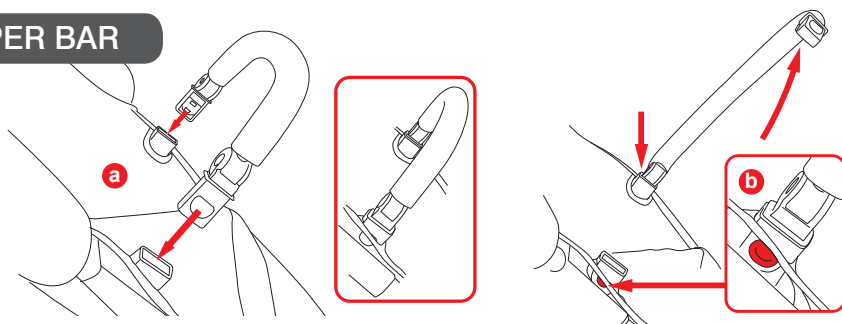
7>SEAT MODE



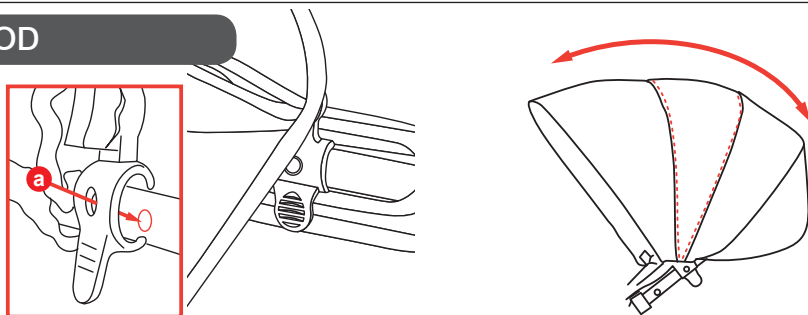
8>BASSINET MODE



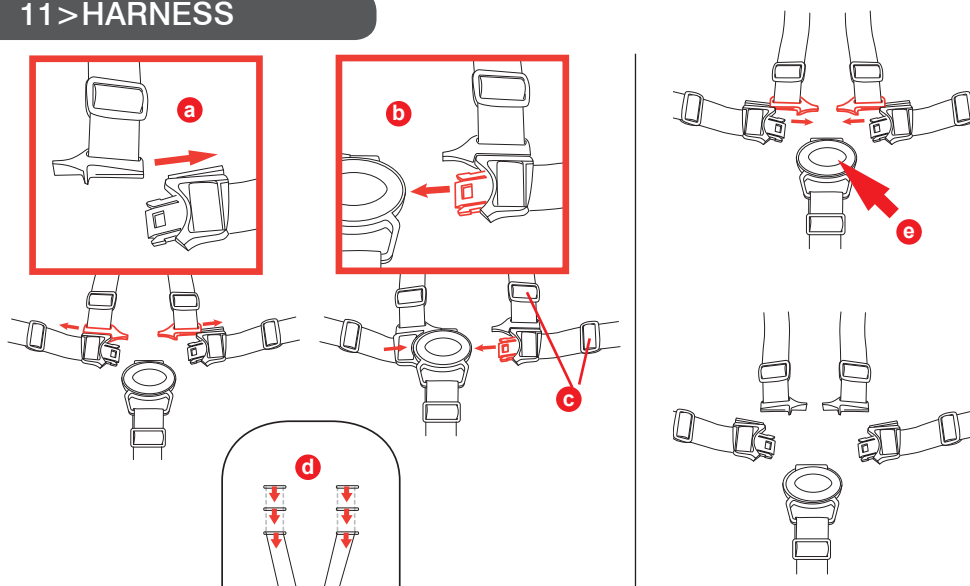
9>BUMPER BAR



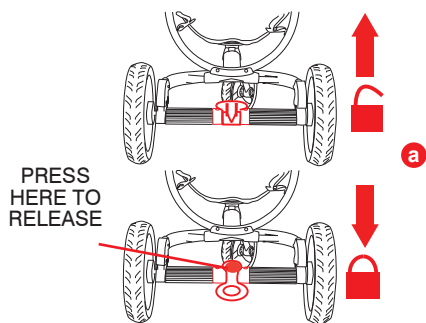
10>HOOD



11> HARNESS



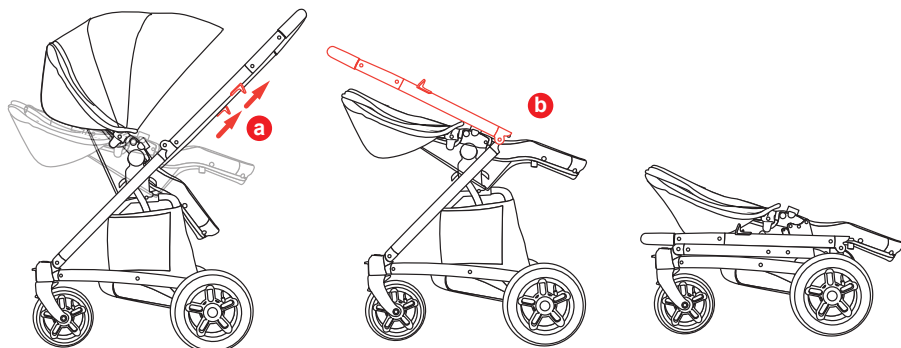
12> BRAKES



13> BOOTCOVER/APRON



14> FOLDING



INSTRUCTIONS

1>PARTS LIST

Seat, Frame, 2x front wheels, 2x rear wheels, 2x axels, bumper bar, hood, rear brake axle, boot cover, bassinet lining and mattress

2>TO OPEN

Lay the stroller frame flat on the ground with the handle on top. Release the frame lock if engaged (a)

Lift the handle upward and clockwise until it locks to a vertical position. Continue to lift the handle (b) until you feel the chassis lock into the open position (e)

Even when fully assembled, your Zee Spark can be folded and opened with the seat installed in either direction as well as in bassinet mode. To open when your Zee Spark is in bassinet mode or when the seat is installed facing the handles and in fully reclined position:

- Release the frame lock (a)
- With your foot on the rear brake bar, and holding the stroller at either side by the handle pivot hinges (c), lift the lower chassis as far as possible (until it locks is the most preferable). This will allow the handle to clear the rear of bassinet or seat.
- Swing the handle over the bassinet/seat until it locks in place.(d).
- Check that the lower chassis has engaged fully at (e)

IMPORTANT WARNING: ALWAYS TEST THAT ALL LATCHES ARE SECURELY ENGAGED BEFORE USE.

3>REAR BRAKE AXLE

With the larger brake pedal facing outward, align the rear axle housing with the rear stroller legs. Insert each rear leg into the corresponding housing of the rear axle. Press in the locking button (a) on the leg while simultaneously pushing the axle housing as far as it will go until it engages. Repeat for the other leg.

Test that each leg has fully engaged in the axle housing.

4>REAR WHEELS

Pressing on the axle release button (a), insert the axle through the outside of the metal hub and through the nylon brake cog.

▲ IMPORTANT: INSERT THROUGH OUTSIDE OF THE WHEEL - THE SIDE WHICH DOES NOT HAVE THE BRAKE COG SPROCKETS

While pressing the axle release button (a), insert the wheel axle into the wheel housing of the frame at the rear of the stroller chassis. Keeping the axle release button depressed, insert the wheel as far as it will go into the channel. Release the button and pull the wheel slightly back toward you ensuring that it has locked securely into place. Repeat this procedure for the other wheel.

To remove a rear wheel, firmly grasp the wheel spokes while pressing the axle release button. Gently pull the wheel free of the wheel housing.

5>FRONT WHEELS

Line each front wheel pin (a) with the corresponding front wheel housing. Depress the housing button while inserting the wheel pin into the wheel housing and push it up until it clicks into place.

The front wheels of your stroller offer either a full, 360° swivel action or a locked position.

To lock the front wheel, turn the wheel so that the bulk of it is beneath the stroller and push down on the wheel lock (b) until it locks into position. Repeat this procedure for the other side.

▲ IMPORTANT WARNING: ALWAYS TEST THAT THE LOCKS ARE FULLY ENGAGED BEFORE USE.

6>INSTALL SEAT

Line up the seat housing (a) with the corresponding connectors located on either side of the stroller frame. Lower the seat onto the connectors and gently push the seat down until it clicks securely into place (b).

▲ NOTE: YOUR SEAT CAN BE INSTALLED EITHER FORWARD OR REARWARD FACING.

To remove the seat, simultaneously lift both triggers (c) in the seat housing (these can be operated using either the front or rear triggers) and lift the seat unit from the frame.

7>SEAT MODE

▲ The stroller seat has 3 positions. To recline or incline the seat simultaneously push the recline buttons located on either side of the seat housing (a) and move the seat into the desired position.

▲ NOTE: SPECIAL CARE MUST BE TAKEN WHEN ADJUSTING THE SEAT POSITION WITH A CHILD IN THE STROLLER.

8>BASSINET MODE

When using your Zee Spark with a newborn, the most comfortable configuration is as a bassinet.

▲ WARNING: THE BASSINET MODE MUST ONLY BE USED UNTIL YOUR BABY IS DEVELOPED ENOUGH TO SIT UP UNAIDED.

To convert your seat from stroller to bassinet mode:

- Remove the bumper bar
- Remove the hood
- Adjust the seat to the fully reclined position.
- Release the 4 buckles (a) beneath the seat at both ends.
- Unzip the footwell (b)
- Push down on the seat surface to create the bassinet interior.

Install the bassinet lining with ERGO Base

• Place the lining over the bassinet interior and align the openings in the lining with the bassinet housing and hood connection sites (c).

• Secure the lining over the bassinet sides to the Velcro tabs located on the bassinet outer body.

• Reinstall the hood and bumper bar.

• Attach the bootcover/apron to the open foot of the bassinet, locating and securing to the snaps at the side of the bassinet body.

To convert your bassinet to a stroller seat.

• Reverse the process outlined previously

• Remove the apron and lining

• Zip up the footwell

• Buckle all support straps beneath the seat

• Install the hood and bumper bar

⚠ IMPORTANT MATTRESS WARNING

Unlike cribs that have rigid sides, the bassinet mattress is specially designed to prevent suffocation. The mattress is designed to be a snug fit and should not exceed 30mm in thickness. Using a thicker or different sized mattress may allow a child's head to Get between the mattress and the side of the bassinet causing suffocation. To help prevent suffocation from entrapment, **USE ONLY THE MATTRESS PROVIDED.**

NEVER use additional mattress or padding. Use only the fitted sheet provided.

⚠ WARNING: DO NOT USE THIS BASSINET ONCE THE CHILD CAN SIT UP UNAIDED

9>BUMPER BAR

Insert each side of the bumper bar fitting into the corresponding housing (a) in the seat frame until you hear it click into place.

The bumper bar can be opened as a "gate" for easy access pressing on one of the release buttons (b) and lifting the side out of the housing. For full removal, repeat this process for the other side.

10>HOOD

Locate the hood stud fixtures found on either side of the stroller, and align hood clamp to studs. Attach clamp onto frame (a).

Your SPARK hood is designed to provide maximum shade and comfort for your child by incorporating our EXPANDA HOOD section.

To increase/decrease the hood size

Open the EXPANDA HOOD section fully using the zip. Gently pull your hood forward; extending it as far as is required.

When no longer needed, fold the EXPANDA HOOD backward, allowing it to fold in on itself. Gently zip the section closed being mindful not to catch any of the fabric in the zipper teeth.

11>HARNES

Your stroller harness is specifically designed with many built in safety features.

This includes the requirement that, when opened, all straps are released so that no

dangerous loops can be formed causing a strangulation hazard.

⚠ WARNING: USE THIS HARNESS AT ALL TIMES.

Closing your harness: Slide each of the shoulder strap bottom guides (a) into the corresponding channel (b) on the top of each side strap prong. Insert each completed prong into the central buckle housing (c).

Carefully adjust the harness straps to snugly fit your child by adjusting the sliders (d) located on each strap. The harness should be fitted to your child's body, tight enough so that they cannot wriggle free of the straps but, loose enough, so as not to cause any discomfort.

For even more flexibility, the height at which your shoulder straps are fitted to the stroller can be adjusted at 3 pointse).

To change the shoulder strap position:

From the rear of the seat, thread the top of the strap back through the harness slot (it fits through the slot.

Rethread the strap back through the desired slot from the front of the seat

Opening your harness: Press the central housing button (e). This will release both side prongs from the central housing. The shoulder and waist straps will release automatically from each other.

If the shoulder and waist straps do not automatically disengage from each other, manually slide the guides of the waist channels. Your harness will separate into 5 sections.

⚠ IMPORTANT WARNING: WHEN NOT IN USE, BE SURE THE SHOULDER AND WAIST STRAPS ARE ALWAYS DISCONNECTED FROM THE CENTRAL HOUSING AND EACH OTHER.

12>BRAKES

Press down on the long leg of the brake lever (a) located on the rear axle to simultaneously engage the brake in both rear wheels.

To release, press down on the shorter leg with your foot.

⚠ IMPORTANT WARNING: ALWAYS TEST THAT THE BRAKES ARE SECURELY DISENGAGED BEFORE USE.

13>BOOTCOVER

Attach the bootcover/apron to the open foot of the bassinet or seat, locating and securing to the snaps at the side of the bassinet body.

14>FOLDING

Your Zee Spark can be folded with the seat in facing in either direction as well as in bassinet mode.

• Release the handle by simultaneously lifting the triggers (a).

• Swing the handle over the seat/bassinet body. As it passes the central pivot joint (b) the lower frame will automatically release and the stroller will fold down completely.

• The chassis will lock in the closed position automatically.

WARNING: TO AVOID INJURY OR DEATH

- ALWAYS APPLY THE BRAKES WHENEVER THE PRAM/STROLLER IS STATIONARY
- DO NOT LEAVE CHILDREN UNATTENDED.
- DO NOT CARRY EXTRA CHILDREN OR BAGS ON THIS PRAM/STROLLER.
- MAKE SURE CHILDREN ARE CLEAR OF ANY MOVING PARTS IF YOU ADJUST THE PRAM/STROLLER. OTHERWISE THEY MAY BE INJURED.

 **WARNING: USE THIS HARNESS AT ALL TIMES.**

 **WARNING: WHEN NOT IN USE DISCONNECT SHOULDER STRAPS FROM THE WAIST STRAP AND/OR BUCKLE.**

- FOLLOW THE MANUFACTURER'S INSTRUCTIONS.

Remember, your child's safety is your responsibility...

- NEVER USE ON STAIRS OR ESCALATORS.
- SECURE THE CHILD IN THE HARNESS AT ALL TIMES.
- ALWAYS USE THE TETHER STRAP WHEN THE STROLLER IS IN USE.
- THE CORRECT USE AND MAINTENANCE OF THIS VEHICLE ARE ESSENTIAL.
- BE SURE THAT ALL CLAMPS AND BUCKLES ARE SECURELY FIXED AND IN PLACE BEFORE USE

 **ALWAYS USE THE HARNESS, CORRECTLY FITTED AND ADJUSTED, WITH YOUR CHILD IN THIS SEAT.**

- THE MAXIMUM WEIGHT OF THE CHILD FOR WHICH THIS STROLLER WAS INTENDED IS 20KGS (44LBS)..
- THE MAXIMUM HEIGHT OF THE CHILD FOR WHICH THIS STROLLER WAS INTENDED IS 90CM (35INCHES).
- THE STROLLER WILL BECOME UNSTABLE IF THE MANUFACTURER'S RECOMMENDED LOAD IS EXCEEDED.
- CARE MUST BE TAKEN WHEN FOLDING AND UNFOLDING THE PRODUCT TO PREVENT FINGER ENTRAPMENT.

- CAN BE USED FROM A NEWBORN BABY ONWARDS.

- NEVER RUN WITH A NEWBORN BABY IN ANY PRAM OR STROLLER UNTIL THE CHILD CAN SIT UP UNASSISTED (APPROXIMATELY 6 MONTHS).

- CHECK ALL PARTS BEFORE USE FOR BREAKAGE OR FATIGUE. DISCONTINUE USE IMMEDIATELY IF ANY PART IS FOUND TO BE DAMAGED OR BROKEN.

- MAXIMUM LOAD OF BASKETS: 5KGS (11LBS).

- DO NOT CARRY ADDITIONAL CHILDREN.

THIS STROLLER IS MANUFACTURED FOR USE WITH ONE CHILD ONLY

- ALWAYS BE AWARE OF THE RISKS PROVIDED BY FIRE AND OTHER SIGNIFICANT SOURCES OF HEAT SUCH AS RADIATORS, ETC. WHICH MAY BE IN THE IMMEDIATE VICINITY OF YOUR STROLLER.

- IT MAY BE UNSAFE TO USE ANY ACCESSORIES OTHER THAN VALCO BABY APPROVED ONES.

- THIS PRODUCT IS INTENDED FOR DOMESTIC USE ONLY. IT IS NOT INTENDED FOR COMMERCIAL USE.

AVOID SUFFOCATION HAZARDS:

- UNLIKE CRIBS THAT HAVE RIGID SIDES, THE BASSINET MATTRESS IS SPECIALLY DESIGNED TO PREVENT SUFFOCATION. THE MATTRESS IS DESIGNED TO BE A SNUG FIT AND SHOULD NOT EXCEED 30MM IN THICKNESS. USING A THICKER OR DIFFERENT SIZED MATTRESS MAY ALLOW A CHILD'S HEAD TO GET BETWEEN THE MATTRESS AND THE SIDE OF THE BASSINET CAUSING SUFFOCATION. TO HELP PREVENT SUFFOCATION FROM ENTRAPMENT, USE ONLY THE MATTRESS PROVIDED.

- NEVER USE ADDITIONAL MATTRESS OR PADDING. USE ONLY THE FITTED SHEET PROVIDED.

 **WARNING: DO NOT USE THIS BASSINET ONCE THE CHILD CAN SIT UP UNAIDED.**

- THE MAXIMUM WEIGHT OF CHILD THAT CAN BE CARRIED IN THE BASSINET IS 9KGS (19LBS)

CARE & MAINTENANCE: Should the chassis become wet, dry off promptly before storing. If this pram is used near the ocean or salted roads, spray the chassis and seat frame with water and dry. We recommend a rust inhibiting product should be used to prevent rust and fatigue on metal parts.

We recommend that you wipe down axles and lubricate the wheels every 3 months. Sand and dirt can grind down axles, if you live near the beach or in a dusty environment you must wipe down the axles and wheels then lubricate them monthly.

AXLES ARE BEST LUBRICATED WITH GREASE OR PETROLEUM JELLY. MOVING PARTS ARE BEST LUBRICATED WITH SILICONE BASED PRODUCTS. DO NOT USE OIL BASED PRODUCTS.