

valco
baby

PRODUCT REFERENCE GUIDE

REBEL Q
SPORT
Stroller

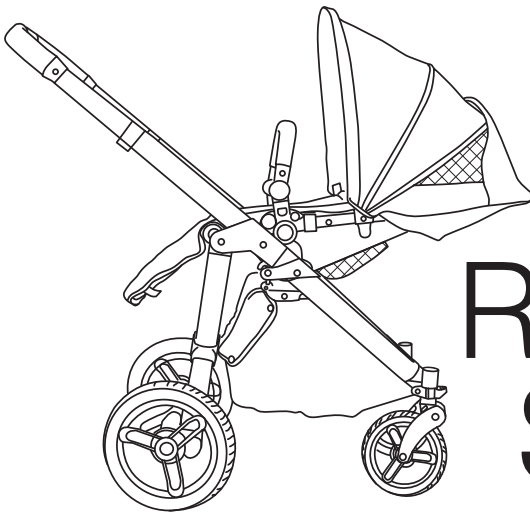


© Copyright
VE 2012
vs190312

FURTHER INFORMATION:
www.valco.com.au

Find us on:





REBEL Q SPORT

Stroller

Thank you for purchasing a quality VALCO BABY product. Please read and follow the instructions outlined in this guide carefully. Familiarise yourself with the construction and safety features; be sure that you understand all the warnings and safety guidelines before use.

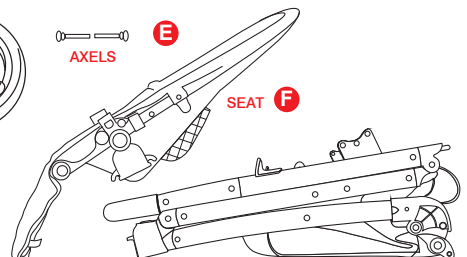
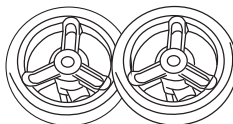
⚠ Important: Please read the following instructions carefully before assembling this product. Retain this guide in a safe place for future reference.

DISCLAIMER

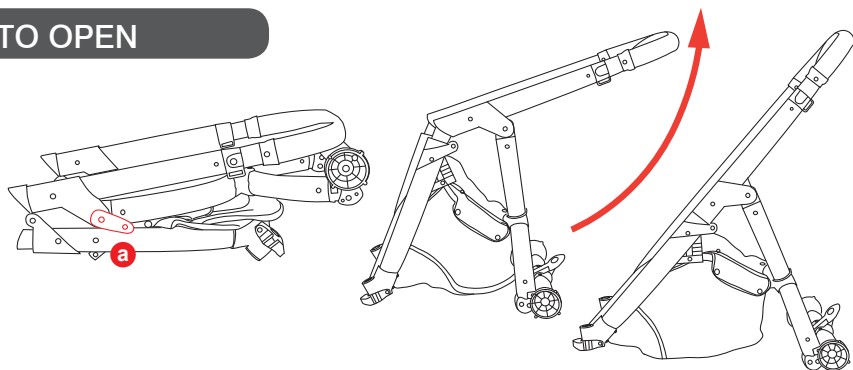
Due to our policy of continuous product development, this product is constantly evolving. It is possible that some features or procedures outlined here have changed since this document was written. If you are unsure of any procedure shown here, please contact us via the web at info@valco.com.au to obtain the most up to date information before use. Include the batch number and model number, which can be found on a sticker on the frame.

All pictures and diagrams herein are provided for illustration purposes only. Actual product, colour or fabric may vary. VALCO BABY reserves the right to modify or alter any specification or colour without notice or obligation to modify any product previously purchased.

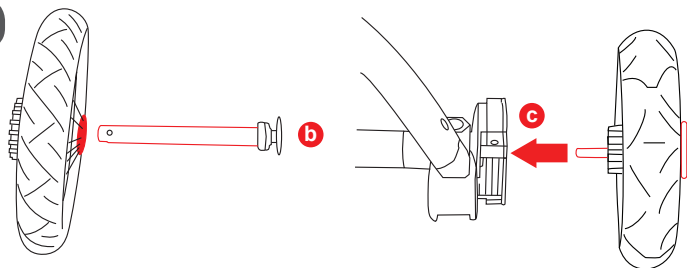
1 > PARTS LIST



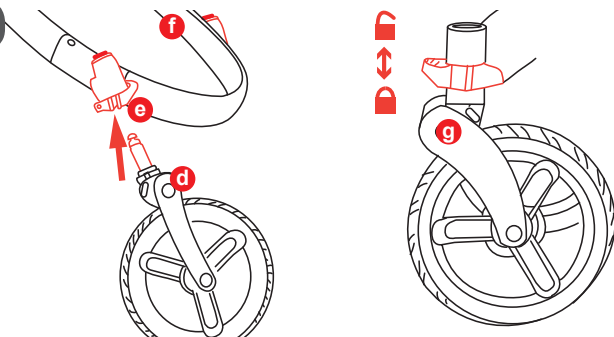
2>TO OPEN



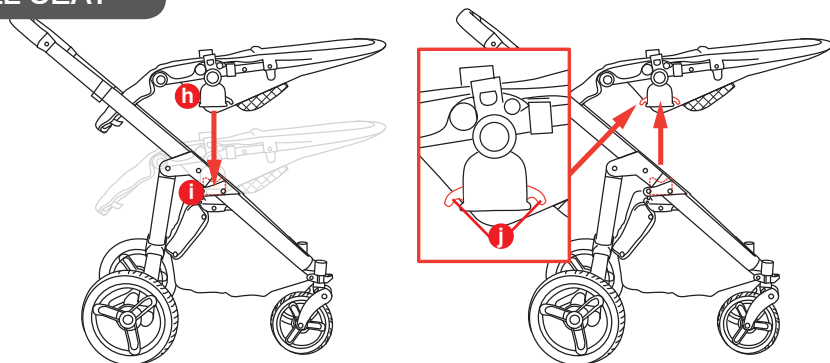
3>REAR WHEELS



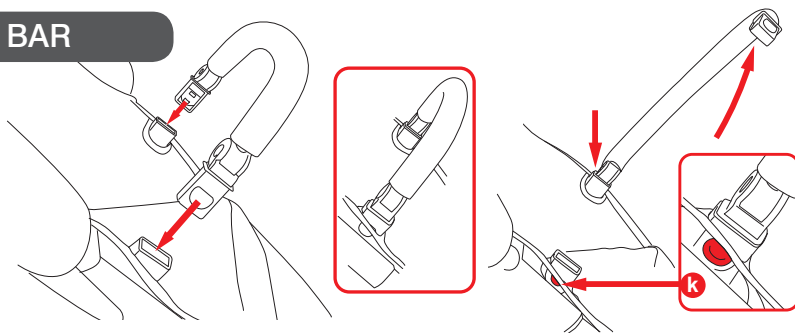
4>FRONT WHEELS



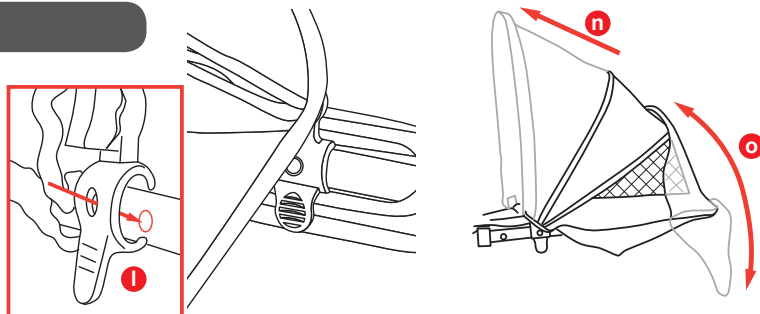
5>INSTALL SEAT



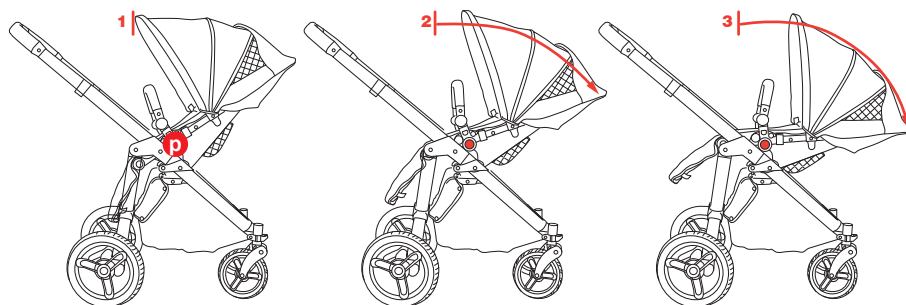
6>BUMPER BAR



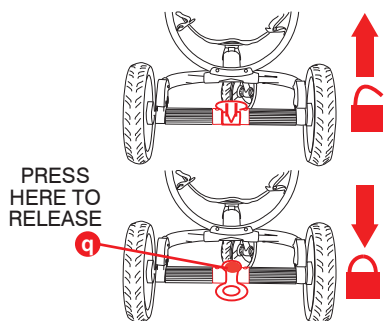
7>HOOD



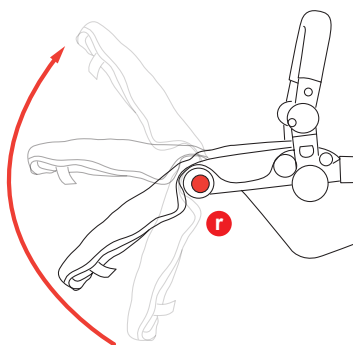
8>SEAT RECLINE



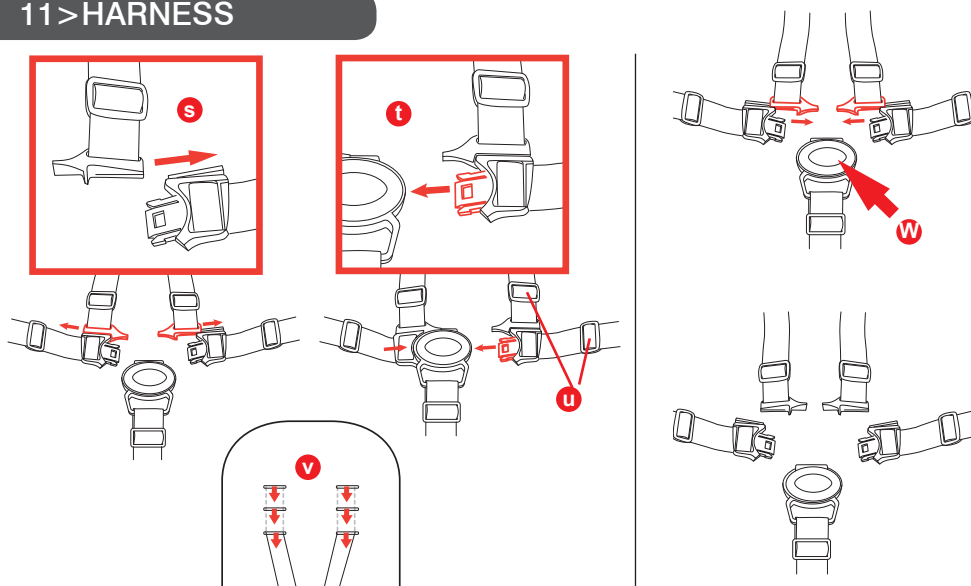
9>BRAKES



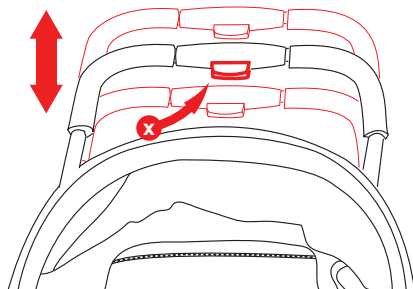
10>FOOTREST



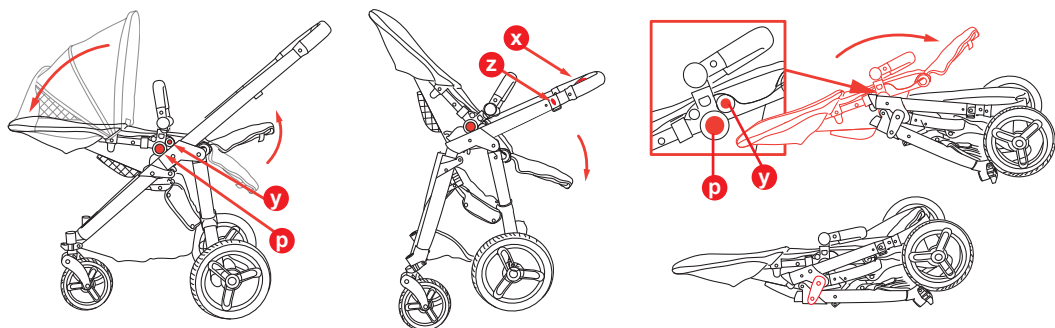
11> HARNESS



12> HANDLE



10> FOLDING



INSTRUCTIONS

1>PARTS LIST

1x bumper bar (A), 1x hood (B), 2x rear wheels (C), 2x front wheels (D), axles (E) seat (F), stroller frame (G).

2>TO OPEN

Lay the stroller frame flat on the ground with the handle facing upwards. Release the frame lock if engaged (a)

Lift the handle upward to a vertical position. You will feel the chassis unfolding as you lift. Continue to lift the handle until you feel the chassis lock into the open position.

⚠ IMPORTANT WARNING: ALWAYS TEST THAT ALL LATCHES ARE SECURELY ENGAGED BEFORE USE.

3>REAR WHEELS

Pressing on the axle release button (b), insert the axle through the outside of the metal hub and through the nylon brake cog. **IMPORTANT: INSERT THROUGH OUTSIDE OF THE WHEEL - THE SIDE WHICH DOES NOT HAVE THE BRAKE COG SPROCKETS**

While pressing the axle release button (b), insert the wheel axle into the wheel housing of the frame at the rear of the stroller chassis (c). Keeping the axle release button depressed, insert the wheel as far as it will go into the channel. Release the button and pull the wheel slightly back toward you to ensuring that it has locked securely into place. Repeat this procedure for the other wheel.

To remove a rear wheel, firmly grasp the wheel spokes while pressing the axle release button. Gently pull the wheel free of the wheel housing.

4>FRONT WHEELS

Line each front wheel pin (d) with the corresponding front wheel housing (e). Insert wheel pin into the wheel housing and push it up until it clicks into place.

To remove the wheel, press down firmly on the release button (f) while pulling the wheel free of the housing.

The front wheels of your stroller offer either a full, 360° swivel action or a locked position.

To lock the front wheel, turn the wheel so that the bulk of it is beneath the stroller and push down on the wheel lock (g) until it locks into position. Repeat this procedure for the other side.

⚠ IMPORTANT WARNING: ALWAYS TEST THAT THE LOCKS ARE FULLY ENGAGED BEFORE USE.

5>INSTALL SEAT

Line up the seat housing (h) with the corresponding connectors (i) located on either side of the stroller frame. Lower the seat onto the connectors and gently push the seat down until it clicks securely into place.

NOTE: YOUR SEAT CAN BE INSTALLED EITHER FORWARD OR REARWARD FACING.

To remove the seat, simultaneously lift one trigger (j) on each side of the seat housings (this can be operated from either the front or rear of the housing) and lift the seat unit from the frame.

6>BUMPER BAR

Insert each side of the bumper bar fitting into the corresponding housing in the seat frame until you hear it click into place.

The bumper bar can be opened as a “gate” for easy access pressing on one of the release buttons (k) and lifting the side out of the housing. For full removal, repeat this process for the other side.

7>HOOD

Locate the hood stud rivets found on either side of the stroller, and align hood clamp over each rivet. Secure clamp onto frame (l).

⚠ WARNING: HOOD MUST ALWAYS BE FULLY INSTALLED AND ATTACHED TO FRAME WHEN USING SEAT IN THE FULLY RECLINED POSITION.

The Expanda hood unzips, increasing the size of your standard hood, to give greater coverage and protection from the sun and elements for your child.

To open the Expanda Hood: Locate the zip in the center of the Expanda Hood and unzip completely (n). Gently pull the Expanda Hood forward until it reaches its full extension.

To close the Expanda Hood: Gently push the Expanda Hood back, allowing the middle section to fold in on itself. Carefully zip the Expanda Hood closed.

The hood offers a flow through ventilation cap at the rear (o). To allow ventilation simply flip the cap down.

8>SEAT RECLINE

The stroller seat has 3 positions. To recline or incline the seat simultaneously push the adjusting buttons located on either side of the seat housing (p) and move the seat into the desired position.

⚠ NOTE: SPECIAL CARE MUST BE TAKEN WHEN ADJUSTING THE SEAT POSITION WITH A CHILD IN THE STROLLER.

9>BRAKES

Press down on the red brake lever (q) located on the rear axle to simultaneously engage the brake in both rear wheels.

To release, press down on the shorter leg with your foot.

⚠ IMPORTANT WARNING: ALWAYS TEST THAT THE BRAKES ARE SECURELY DISENGAGED BEFORE USE.

10>FOOTREST

To raise the footrest simply lift the end up to the desired position. To lower your footrest, simultaneously press the two adjusting buttons (r) on either side of the footrest allow it to drop down.

11>HARNESS

Your stroller harness is specifically designed with many built in safety features.

This includes the requirement that, when opened, all straps are released so that no dangerous loops can be formed causing a strangulation hazard.

⚠ WARNING: YOUR CHILD MUST ALWAYS BE HARNESSSED WHEN IN THE STROLLER

Closing your harness: Slide each of the shoulder strap bottom guides (s) into the corresponding channel (t) on the top of each side strap prong. Insert each completed prong into the central buckle housing (w).

Carefully adjust the harness straps to snugly fit your child by adjusting the sliders (v) located on each strap. The harness should be fitted to your child's body, tight enough so that they cannot wriggle free of the straps but, loose enough, so as not to cause any discomfort.

For even more flexibility, the height at which your shoulder straps are fitted to the stroller can be adjusted at 3 points(v).

To change the shoulder strap position:

From the rear of the seat, thread the top of

the strap back through the harness slot (it fits through the slot).

Rethread the strap back through the desired slot from the front of the seat

Opening your harness: Press the central housing button (w). This will release both side prongs from the central housing. The shoulder and waist straps will release automatically from each other.

If the shoulder and waist straps do not automatically disengage from each other, manually slide the guides of the waist channels. Your harness will separate into 5 sections.

⚠ IMPORTANT WARNING: WHEN NOT IN USE, BE SURE THE SHOULDER AND WAIST STRAPS ARE ALWAYS DISCONNECTED FROM THE CENTRAL HOUSING AND EACH OTHER.

12>HANDLE

Your handle can be adjusted to multiple positions. Press the centre locking button (x) while simultaneously moving the handle up or down.

Releasing the locking button will allow the handle to lock into the next position.

12>FOLDING

Adjust the handle down to its lowest position. While still keeping the central locking button (x) pressed, hold the frame lock button (z) firmly depressed. Continue to push the handle firmly in the direction of the chassis, past the frame lock until it engages the lock spring. This will unlock the frame. Press down on the handle to fold the frame and continue to ease the handle downward until the frame is fully collapsed and the chassis locks closed at (a). Adjust the seat to its most reclined position as outlined in 8.

Depending on which way your seat is facing when folded, your Rebel Q Sport seat can be made to fold even more compactly by simultaneously pressing the transport position buttons (y) and seat adjustment buttons (p), thereby allowing the seat to swing even further downward.

⚠ IMPORTANT: WHEN REOPENING THE STROLLER, BE SURE TO LIFT THE SEAT BACK UP INTO THE USE POSITION BEFORE USE!



WARNING: TO AVOID INJURY OR DEATH




- ALWAYS APPLY THE BRAKES WHENEVER THE PRAM/STROLLER IS STATIONARY
- DO NOT LEAVE CHILDREN UNATTENDED.
- DO NOT CARRY EXTRA CHILDREN OR BAGS ON THIS PRAM/STROLLER.
- MAKE SURE CHILDREN ARE CLEAR OF ANY MOVING PARTS IF YOU ADJUST THE PRAM/STROLLER. OTHERWISE THEY MAY BE INJURED.

 **WARNING: USE THIS HARNESS AT ALL TIMES.**

 **WARNING: WHEN NOT IN USE DISCONNECT SHOULDER STRAPS FROM THE WAIST STRAP AND/OR BUCKLE.**

- FOLLOW THE MANUFACTURER'S INSTRUCTIONS.

Remember, your child's safety is your responsibility...

- NEVER USE ON STAIRS OR ESCALATORS.
- ALWAYS USE THE TETHER STRAP WHEN THE STROLLER IS IN USE.
- THE CORRECT USE AND MAINTENANCE OF THIS VEHICLE ARE ESSENTIAL.
- BE SURE THAT ALL CLAMPS AND BUCKLES ARE SECURELY FIXED AND IN PLACE BEFORE USE
-  **ALWAYS USE THE HARNESS, CORRECTLY FITTED AND ADJUSTED, WITH YOUR CHILD IN THIS SEAT.**
- THE MAXIMUM WEIGHT OF THE CHILD FOR WHICH THIS STROLLER WAS INTENDED IS 30KGS (66LBS).
- THE MAXIMUM HEIGHT OF THE CHILD FOR WHICH THIS STROLLER WAS INTENDED IS 90CM (35INCHES).
- THE STROLLER WILL BECOME UNSTABLE IF THE MANUFACTURER'S RECOMMENDED LOAD IS EXCEEDED.
- CARE MUST BE TAKEN WHEN FOLDING AND UNFOLDING THE PRODUCT TO PREVENT FINGER ENTRAPMENT.
- NEVER RUN WITH A NEWBORN BABY IN ANY PRAM OR STROLLER UNTIL THE CHILD CAN SIT UP UNASSISTED (APPROXIMATELY 6 MONTHS).
- CHECK ALL PARTS BEFORE USE FOR BREAKAGE OR FATIGUE. DISCONTINUE USE IMMEDIATELY IF ANY PART IS FOUND TO BE DAMAGED OR BROKEN.
- MAXIMUM LOAD OF BASKETS: 3.5KGS (7.5LBS).
- DO NOT CARRY ADDITIONAL CHILDREN.
- THIS STROLLER IS MANUFACTURED FOR USE WITH ONE CHILD ONLY
- ALWAYS BE AWARE OF THE RISKS PROVIDED BY FIRE AND OTHER SIGNIFICANT SOURCES OF HEAT SUCH AS RADIATORS, ETC. WHICH MAY BE IN THE IMMEDIATE VICINITY OF YOUR STROLLER.
- IT MAY BE UNSAFE TO USE ANY ACCESSORIES OTHER THAN VALCO BABY APPROVED ONES.
- THIS PRODUCT IS INTENDED FOR DOMESTIC USE ONLY. IT IS NOT INTENDED FOR COMMERCIAL USE.

Should the chassis become wet, dry off promptly before storing. If this pram is used near the ocean or salted roads, spray the chassis and seat frame with water and dry. We recommend a rust inhibiting product should be used to prevent rust and fatigue on metal parts.

We recommend that you wipe down axles and lubricate the wheels every 3 months. Sand and dirt can grind down axles, if you live near the beach or in a dusty environment you must wipe down the axles and wheels then lubricate them monthly.

AXLES ARE BEST LUBRICATED WITH GREASE OR PETROLEUM JELLY. MOVING PARTS ARE BEST LUBRICATED WITH SILICONE BASED PRODUCTS. DO NOT USE OIL BASED PRODUCTS.

FURTHER INFORMATION:
www.valco.com.au

Find us on:



valco
baby