



# Ion and Ion for 2 Travel System Adaptor

Compatible with most Graco, Peg Perego, Maxi Cosi,  
and Chicco Car Seats

## PRODUCT REFERENCE GUIDE

Thank you for purchasing a quality Valco Baby product. Please read and follow the instructions outlined in this guide carefully. Familiarise yourself with the construction and safety features; be sure that you understand all the warnings and safety guidelines before use.

**Important: Please read the following instructions carefully before assembling this product. Retain this guide in a safe place for future reference.**



Due to our policy of continuous product development, this product is constantly evolving. It is possible that some features or procedures outlined here have changed since this document was written. If you are unsure of any procedure shown here, please contact us via the web at [info@valcobaby.com](mailto:info@valcobaby.com) or in Canada at [canada@valcobaby.com](mailto:canada@valcobaby.com) to obtain the most up to date information before use. Include the batch number, which can be found on a sticker on the frame.

All pictures and diagrams herein are provided for illustration purposes only. Actual product, color or fabric may vary. Valco Baby reserves the right to modify or alter any specification or color without notice or obligation to modify any product previously purchased

### FURTHER INFORMATION

In Australia/New Zealand

[www.valco.com.au](http://www.valco.com.au)

In North America only

[www.valcobaby.com](http://www.valcobaby.com)  
1800 610 7850

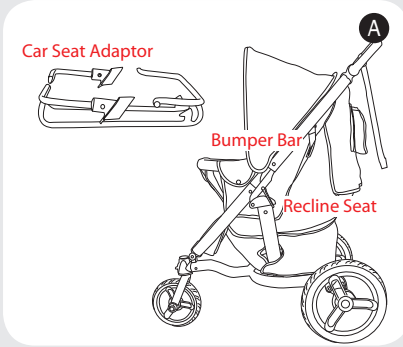
In Canada only

[canada@valcobaby.com](mailto:canada@valcobaby.com)  
416-488-1900

© Copyright VE 2009

# CAR SEAT ADAPTOR

FIGURE A



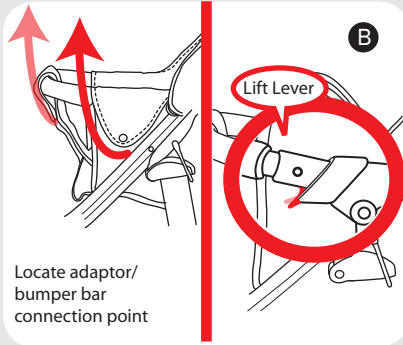
1. Begin preparing the Ion Stroller for the Car Seat Adaptor by reclining the seat to its fully reclined position.
2. Remove your adaptor bar from packaging.

BE SURE YOUR ADAPTOR BAR IS THE CORRECT ONE FOR YOUR CAR SEAT BY CHECKING THAT THE WHITE LABEL ON YOUR ADAPTOR BAR MATCHES YOUR PRODUCT DESCRIPTION.

CONTACT VALCO BABY AT [info@valcobaby.com](mailto:info@valcobaby.com) IF YOUR PRODUCT DESCRIPTION DOES NOT MATCH.

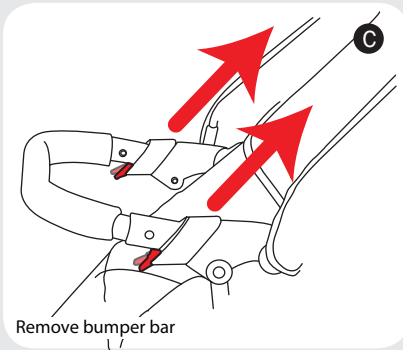
FIGURE B

## REMOVING BUMPER BAR



3. Undo the snaps of the leg divider.
4. Undo the snap pockets covering the bumper bar on the side of your stroller.
5. Locate the Release Lever on the bumper bar where the bumper bar connects to the stroller.

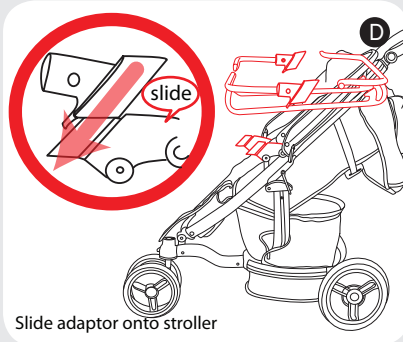
FIGURE C



6. Slightly lift the Release Lever to disengage the bumper bar.
7. Slide bumper bar up, and off the stroller.

FIGURE D

## INSTALLING ADAPTOR



8. Take adaptor bar and slide it onto the stroller connection point until it clicks.

THE ADAPTOR BAR IS NOT SECURE ON YOUR STROLLER UNTIL IT CLICKS INTO PLACE AND CANNOT BE REMOVED UNLESS LEVER IS LIFTED. IF YOUR ADAPTOR BAR SIMPLY SLIDES OFF THE STROLLER FRAME. IT IS NOT SECURE.

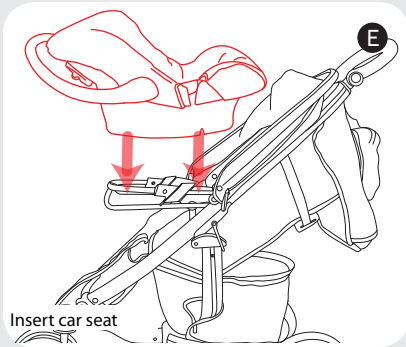


FIGURE E

9. Place car seat in the seat portion of the stroller.

**IF YOU OWN A GRACO OR PEG PEREGO CAR SEAT CONTINUE HERE:**

FIGURE F

10. Apply pressure to the car seat until it clicks into the adaptor.

TO BE SURE YOUR CAR SEAT IS SECURE TRY TO LIFT THE STROLLER BY THE CAR SEAT. IF YOU CAN DO THAT WITHOUT THE CAR SEAT DETACHING, IT IS SECURE.

11. Adjust the recline on the stroller so that the car seat is sitting in the most comfortable and secure position.

12. The car seat is now secure in your stroller.

**IF YOU OWN A MAXI COSI OR CHICCO CAR SEAT CONTINUE HERE:**

FIGURE G

10. Locate a Male/Female strap attached to side of the adaptor bar.

11. Slip strap through the car seat belt hooks on the side of the car seat.

12. Repeat with the other strap.

13. Insert Male clip into its Female counterpart and buckle

14. Adjust straps to tighten around car seat.

15. Adjust the recline on the stroller so that the car seat is sitting in the most comfortable and secure position.

16. The car seat is now secure in your stroller.

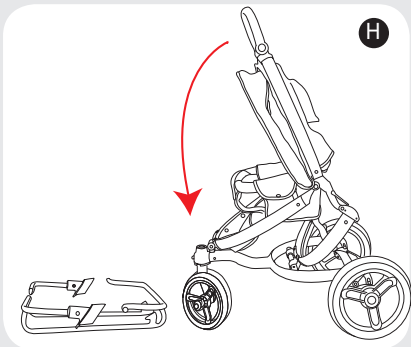
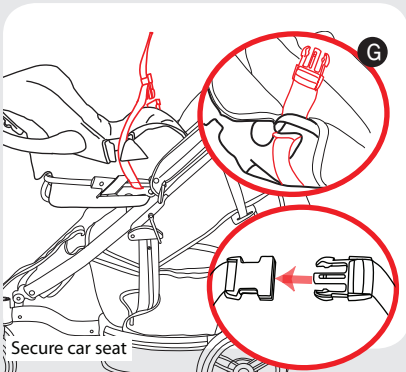
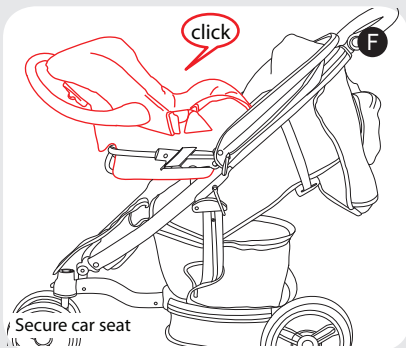


FIGURE H

**FOLDING STROLLER**

1. Please remove your car seat adaptor from stroller before folding the stroller.

NOTE: FOLDING THE STROLLER WITHOUT REMOVING THE ADAPTOR COULD CAUSE UNNECESSARY WEAR AND TEAR TO THE STROLLER.

2. To remove the adaptor, reverse the steps performed in FIGURE D by lifting lever and sliding adaptor off.



## IF YOU OWN AN ION FOR 2 CONTINUE HERE:

NOTE: THERE CAN ONLY BE ONE ADAPTOR ON THE STROLLER AT A TIME.

THE ADAPTOR MAY PROVIDE A MORE COMFORTABLE FIT FOR THE CAR SEAT AND THE OTHER CHILD ON A SPECIFIC SIDE OF THE STROLLER. BE SURE TO TRY OUT BOTH SIDES BEFORE SETTling THE CAR SEAT IN.

## WARNINGS

Remember, your child's safety is your responsibility...

- ALWAYS FOLLOW CAR SEAT MANUFACTURERS INSTRUCTIONS WHEN IN USE.
- NEVER LEAVE ANY CHILD UNATTENDED AT ANY TIME.
- WHEN IN STROLLER, YOUR CHILD MUST ALWAYS WEAR THE SAFETY HARNESS, CORRECTLY FITTED AND ADJUSTED AT ALL TIMES.
- PUT ON ALL THE BRAKES WHENEVER YOU PARK THE STROLLER.
- NEVER EXCEED THE MAXIMUM WEIGHT OR HEIGHT OF THE CHILD FOR WHICH YOUR CAR SEAT IS INTENDED
- REFER TO YOUR CAR SEAT MANUAL FOR USAGE INSTRUCTIONS.
- DO NOT CARRY EXTRA CHILDREN OR BAGS ON THIS STROLLER.
- MAKE SURE CHILDREN ARE CLEAR OF ANY MOVING PARTS IF YOU ADJUST THE STROLLER. OTHERWISE THEY MAY BE INJURED.
- NEVER USE ON STAIRS OR ESCALATOR.
- ALWAYS USE THE TETHER STRAP WHEN THE STROLLER IS IN USE.
- THE CORRECT USE AND MAINTENANCE OF THIS VEHICLE ARE ESSENTIAL.
- REFER TO YOUR CAR SEAT MANUAL FOR USAGE INSTRUCTIONS.
- NEVER RUN WITH A NEWBORN BABY IN ANY STROLLER.
- MAXIMUM LOAD OF BASKETS: 3.5KGS.
- ALWAYS BE AWARE OF THE RISKS PROVIDED BY FIRE AND OTHER SIGNIFICANT SOURCES OF HEAT AS RADIATORS ETC WHICH MAY BE IN THE IMMEDIATE VICINITY OF THE STROLLER.
- IT MAY BE UNSAFE TO USE ANY ACCESSORIES OTHER THAN VALCO BABY APPROVED ONES.
- BE SURE TO CHECK THAT ALL CLAMPS, VELCRO AND BUCKLES ARE SECURELY FIXED AND IN PLACE BEFORE USE.
- CHECK ALL PARTS FOR BREAKAGE OR FATIGUE BEFORE USE. DISCONTINUE IMMEDIATELY IF ANY PART IS FOUND TO BE DAMAGED OR BROKEN.
- THIS PRODUCT IS INTENDED FOR DOMESTIC USE ONLY. IT IS NOT INTENDED FOR COMMERCIAL USE.



**In Australia/New Zealand**

**[www.valco.com.au](http://www.valco.com.au)**

**In North America only**

**[www.valcobaby.com](http://www.valcobaby.com)**

**1 800 610 7850**

**Canada 416 488 1900**